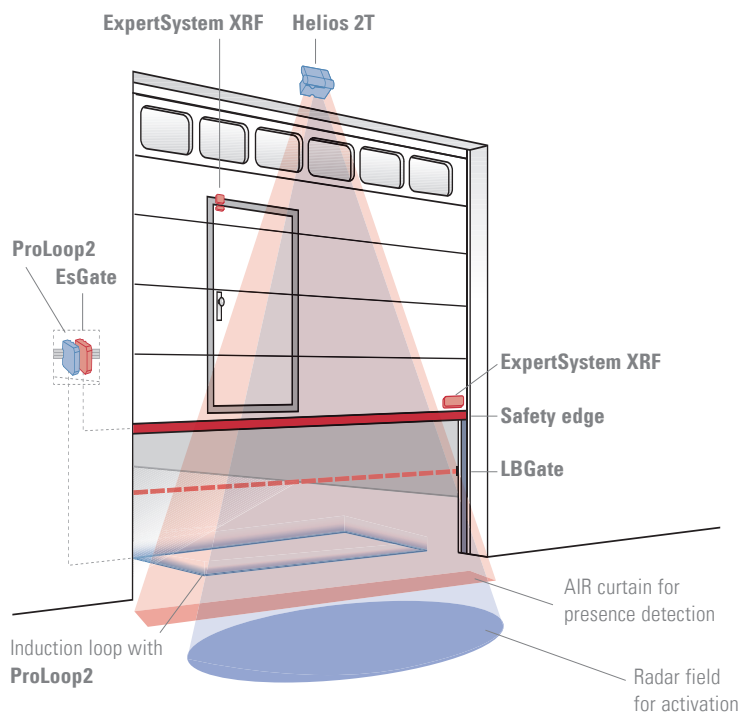


Sensor systems for industrial doors

- Quick and easy installation and startup
- Can be configured for a wide range of applications
- High level of safety thanks to reliable technology

Vertical door application



➔ Activation

Motion detector

Herkules 2E

Motion and presence detector

Helios 2T

Loop detector

ProLoop2

⚠ Safety

Safety edge systems

Electrical safety edges
(ExpertSystem XL, ClickLine, CoverLine)

Wireless signal transmission system

ExpertSystem XRF

Signal evaluation

Switching devices

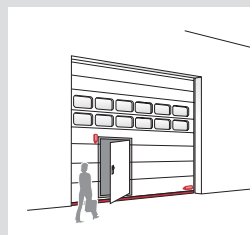
Light barrier

LBGate



Herkules 2E, the versatile motion detector for industrial doors

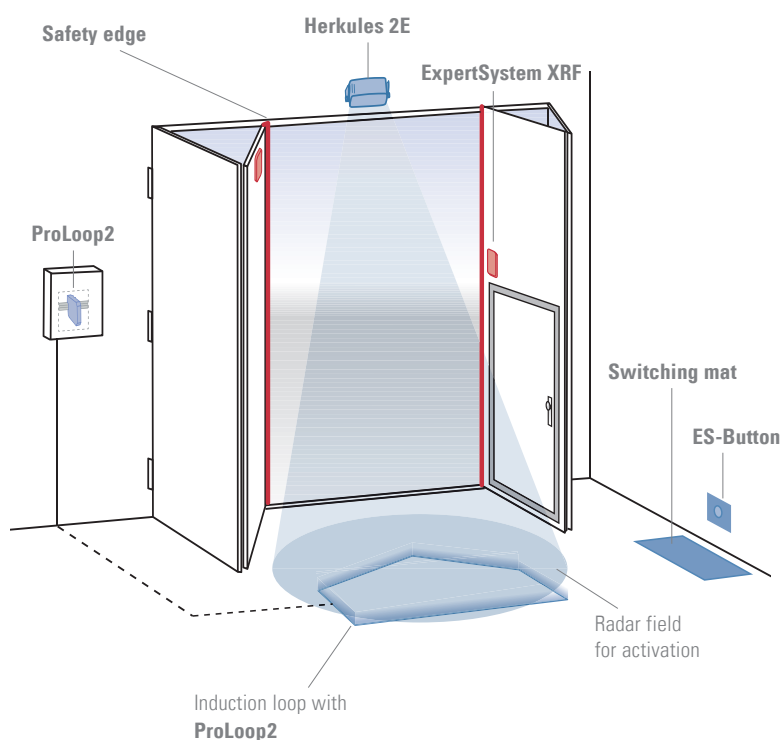
Cross traffic masking, person/vehicle differentiation and direction recognition save energy costs. Plug & Play presets ensure efficient startup, while radar technology allows for reliable motion detection.



Parallel protection of closing edges and secondary doors

ExpertSystem XRF supports two-channel, wireless and therefore wear-free signal transmission for pressure-sensitive safety edges and wicket doors. The transmitter is easily integrated.

Folding door application



➔ Activation

Motion detector

Herkules 2E

Motion and presence detector

Helios 2T

Loop detector

ProLoop2

Switching mat /flat button

Electric switching mat
ES-Button

⚠ Safety

Safety edge systems

Electrical safety edges
(ExpertSystem XL, ClickLine, CoverLine)

Wireless signal transmission system

ExpertSystem XRF

Signal evaluation

Switching devices



➔ Herkules 2E

Microwave motion detector

Quick-response pulse generation for all kinds of industrial doors

Special features

- Crossing traffic masking
- Differentiation between people and vehicles
- Direction recognition
- Slow motion detection
- Mounting height up to 7 m
- Preprogrammed for most popular applications



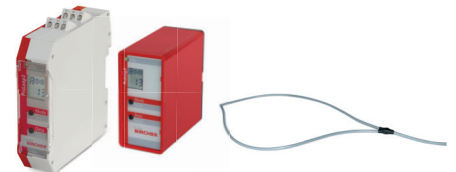
➔ Helios 2T

Microwave motion and AIR presence detector

For convenient activation and presence detection at industrial doors

Special features

- Crossing traffic masking
- Differentiation between people and vehicles
- Direction recognition
- Variable adjustable active infrared curtain
- Mounting height up to 6 m
- Quick and easy configuration with mobile app



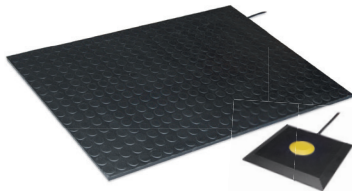
➔ ProLoop2

Programmable loop detector

Reliable evaluation and monitoring of induction loops

Special features

- Intuitive user interface with LCD display
- Quick startup thanks to automatic configuration (Plug & Play)
- Simulation mode
- Loop inductance display
- For DIN rail or 11-pin connection
- Highly sensitive, e.g. bicycle detection



➔ Switching mat/ ES-Button

Electric switching mat/flat button

Tailor-made to your application

Special features

- Reliable, robust, low-maintenance
- Access control or activation
- Individual passage at security locks
- Several switching zones possible



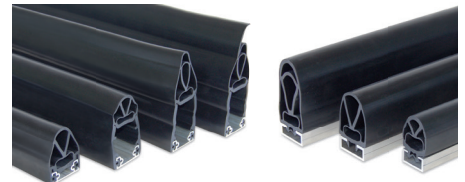
➔ ExpertSystem XL

Electrical safety edges

Modular pressure-sensitive edge system for gate applications

Special features

- High sensitivity and quick response time
- Fast assembly and easy installation
- Water-tight and long service life
- Concealed mounting rail
- Type tested according to EN 12978 and EN ISO 13856 in combination with BBC Bircher evaluation units



➔ CoverLine/ClickLine

Electrical safety edges

Optimal profile shape for easy installation

Special features

- Individual model to suit customer requirements
- Water-tight, long service life
- Concealed installation rails (CoverLine)
- Suitable large and/or small doors
- Type tested according to EN 12978 in combination with BBC Bircher evaluation units



➔ ExpertSystem XRF

Wireless signal transmission system

Wirelessly transmitting the status of electric safety edges

Special features

- Wear-free signal transmission
- Two-channel: separate evaluation e.g. for safety edge and wicket doors
- Up to 7 transmitters per channel
- Type tested in acc. with EN ISO 13849-1
- With integrated wicket door switch



➔ EsGate

Switching device for evaluation of electric safety edges

Especially developed for door applications

Special features

- High safety level
- Intuitive user interface with diagnosis tools
- Type tested in acc. with EN ISO 13849-1



➔ LBGate

One-way/reflection light barrier

Industrial light barrier: small, reliable and robust

Special features

- Insensitive to disturbing light
- Easy to install
- With terminal compartment or cable
- Insensitive to influencing factors such as energy-saving light bulbs or shiny, reflecting objects

BBC Bircher Smart Access



BBC Bircher Smart Access with its headquarters in Beringen, Switzerland, is the specialist for pressure-sensitive and contact-free sensor systems. We offer solutions for automatic doors and gates for public transport, industry and the care sector. Precious long-term and cooperative customer relations, expert know-how and ground-breaking innovations have been shaping our success for more than 50 years.

The staff at BBC Bircher Smart Access is fully committed to offer efficient and high-quality solutions for you on a daily basis.

Competent partners for our products are located in a large number of countries. Our specialists and authorised partners are very happy to offer personal advice and develop individual solutions with you.

An international contact overview can be found on our website at bircher.com

BBC Bircher Smart Access

Wiesengasse 20
8222 Beringen
Switzerland
Phone +41 52 687 11 11
info@bircher.com
bircher.com