



Sensorama

- Comprehensive sensor solutions for diverse applications
- Modular product portfolio
- Customised solutions

The company



BBC Bircher Smart Access is a company of the private Swiss BBC Group

About BBC Bircher Smart Access

BBC Bircher Smart Access develops, produces and distributes intelligent sensor solutions for access systems. With people and vehicle flows growing around the world, ever greater demands are being placed on access points. BBC Bircher's solutions meet the increasing needs for safety, hygiene, accessibility and energy efficiency.

Not only are BBC Bircher's sensor solutions characterised by the company's comprehensive product portfolio and an international manufacturing network, but they also stand out from the crowd thanks to the dedication and teamwork of its approximately 180 employees and their extensive technological expertise.

For more than 60 years, BBC Bircher has been fulfilling the specific needs of its international clients with an extended distribution network spanning Europe, Asia and North America. BBC Bircher Smart Access has been a business unit of the BBC Group since 1991.

Further information can be found on our website: bircher.com

Sensor solutions

ExpertSystem

ExpertSystem XL

Modular pressure-sensitive edge system



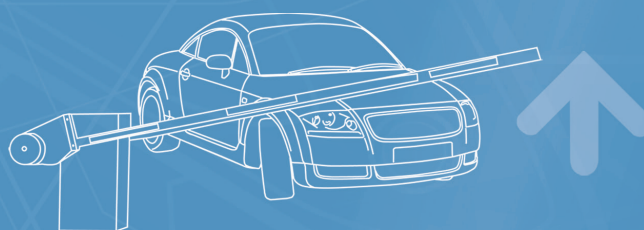
For gate applications



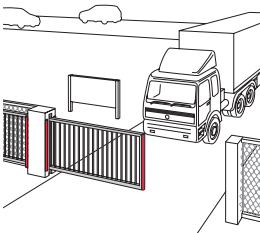
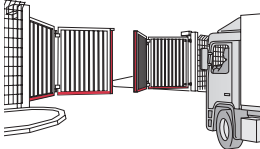
ExpertSystem XRF

Wireless signal transmission system



For applications with high requirements for performance and design



Application			
Example from the field			
Product benefits	<ul style="list-style-type: none"> • Heightened sensitivity and short response time • Fast assembly and easy installation • Attractive appearance 	<ul style="list-style-type: none"> • Short setup time • High interference immunity and long battery life • Safety level cat. 2, PLc or cat. 3, PLd available 	
Supplementary products	Herkules 2E Helios 2T ProLoop ProAccess	Herkules 2E Helios 2T ProLoop ProAccess	
Variants	Height x width in mm: 42 x 29, 49 x 36/42, 56 x 36/41, 74 x 37/43, 80 x 42, 99 x 44	1-channel, 2-channel, DIN housing, integrated transmitter, wicket door switch	



Detectors for industrial door and gates

Helios 2T

Microwave motion and
AIR presence detector



For industrial doors

Herkules 2E

Microwave motion detector



For industrial doors

ProAccess

Vehicle detection sensor



For barriers and gates

ProLoop2

Loop detector



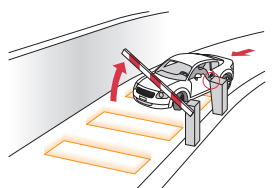
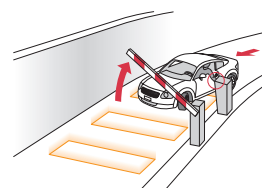
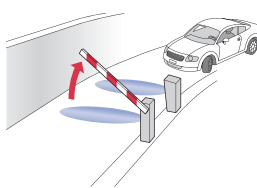
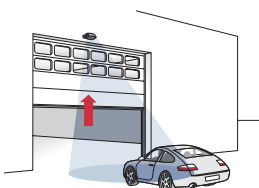
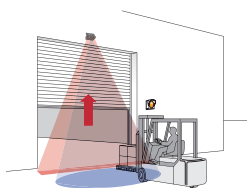
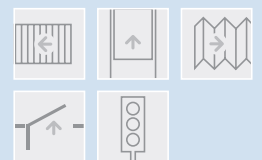
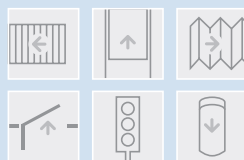
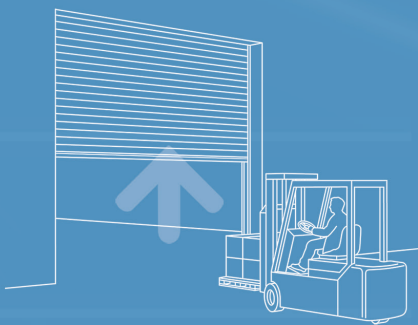
For reliable monitoring and
evaluation of induction loops

ProLoop Lite

Loop detector



The compact standard
version of ProLoop2



- Fast installation and easy parameter configuration
- Flexible adaptation of the detector fields
- Reduction of energy consumption

- Cross-traffic masking and direction recognition
- Person/vehicle distinction
- Pulse-on-exit functionality

- Quick and easy to install thanks to above ground mounting
- With built-in heater and IP65 protection optimally suitable for outdoor operation

- Direction logic function
- Protection against power failure
- Increased sensitivity

- Increased sensitivity

ExpertSystem XL
CoverLine, ClickLine
ExpertSystem XRF
LBGate

ExpertSystem XL
CoverLine, ClickLine
ExpertSystem XRF
LBGate

ExpertSystem XL
S-Line

Pre-assembled loops
Herkules 2E
Helios 2T

Pre-assembled loops
Herkules 2E
Helios 2T

ProLoop2 DIN rail
ProLoop2 for 11-pin plug-in
base

For one loop
For two loops



Revolving door



Vertical door



Folding door



Barrier



Traffic lights



Bollard

Detectors for industrial doors and gates

ClickLine/ CoverLine

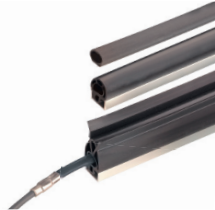
Electrical safety edge system



Seamlessly integrated with click-fit or cover foot mounting

S-Line

Electrical miniature safety edge system



Available with or without sealing lips

LBGate

Thru-beam and reflection light barrier



For the detection of people and vehicles



Application				
Example from the field				
Product benefits	<ul style="list-style-type: none"> In accordance with EN ISO 13856-2 and EN 12978 	<ul style="list-style-type: none"> In accordance with EN ISO 13856-2 and EN 12978 	<ul style="list-style-type: none"> Reliable protection in a range of up to 30 m 	
Supplementary products	Safety switching devices Aluminium mounting profiles ExpertSystem XRF ProAccess	Safety switching devices ExpertSystem XRF ProAccess	Herkules 2E, Helios 2T ExpertSystem XL CoverLine, ClickLine ExpertSystem XRF	
Variants	Rubber profiles for the public transport sector or for pinching and shearing points on machines and systems	Rubber profiles for the public transport sector or for pinching and shearing points on machines and systems	LBGate R18 LBGate TB18 LBGate R25 LBGate R25.D	

Detectors for pedestrian doors

PrimeTec

Motion and presence detector



For activation and protection of primary closing edges

PrimeScan

Active infrared presence detector



For protection of secondary closing edges

PrimeMotion

Microwave motion detector



For activation of sliding doors, swing doors and revolving doors

CleanSwitch

Contact-free switch



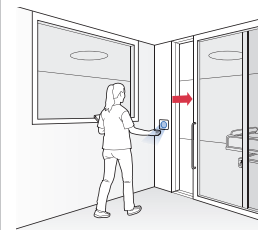
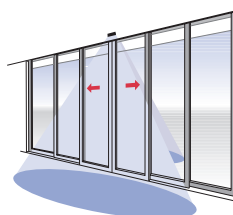
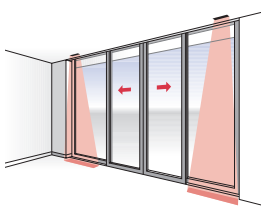
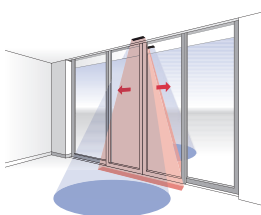
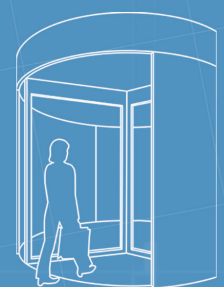
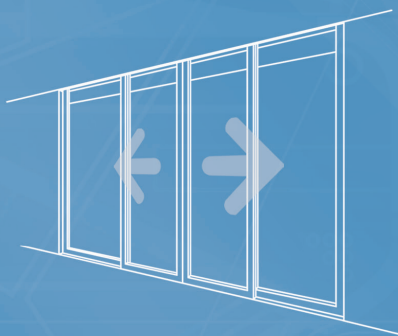
For hygienic activation; can also be integrated into switch systems

CleanSwitch Lock

Contact-free lock



For convenient locking; can also be integrated into switch systems



- Activation and
- A: Protection of escape and rescue routes
- B: Protection of secondary closing edges

- Protection of secondary closing edges

- B: An activation sensor that can be used flexibly
- C: Simple activation sensor for automatic doors

- Attractive design
- Compatible with standard flush-mounted boxes
- Seamless integration into switch systems

- No-touch hygienic door lock
- Attractive design with visual feedback

PrimeScan
PrimeMotion
ArtMotion 2
Ceiling installation set PTIS IP65 (water-jet proof)

PrimeTec
ArtMotion 2

PrimeTec
PrimeScan
TopScan
UniScan

TopScan
UniScan
PrimeTec B
Merkur 2

TopScan
UniScan
PrimeTec B
Merkur 2

PrimeTec A:
EN 16005 and DIN 18650
PrimeTec B: EN 16005

PrimeScan A:
EN 16005 and DIN 18650
PrimeScan B: EN 16005

PrimeMotion B
PrimeMotion C
ArtMotion 2

CleanSwitch
CleanSwitch Basic
CleanSwitch Integration for:
Hager, Feller, Gira, Jung

CleanSwitch Lock
CleanSwitch Lock Integration
for: Hager, Feller, Gira, Jung

Detectors for pedestrian doors

Merkur 2

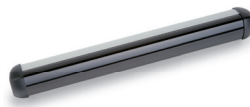
Microwave motion detector



Universally applicable with especially homogeneous field characteristics

UniScan/TopScan

Active infrared presence detector



Travelling on the door panel with extremely dense area protection/point protection

SpotScan

Active infrared presence detector



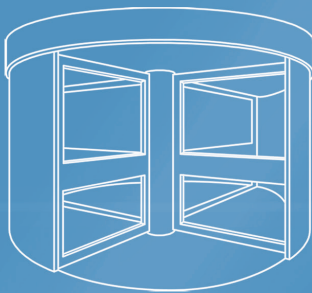
With variable applications

PIR 20 / PIR 30

Passive infrared motion detector



For people flow, small and easy to integrate



Application				
Example from the field				
Product benefits	<ul style="list-style-type: none"> • Slow motion detection • Cross-traffic masking • Direction recognition 	<ul style="list-style-type: none"> • In acc. DIN 18650/EN 16005 • Easy installation • Safety function irrespective of the background 	<ul style="list-style-type: none"> • Presence detector for protecting various danger points 	<ul style="list-style-type: none"> • Precise and highly varied detection areas
Supplementary products	PrimeTec TopScan, UniScan PrimeMotion ArtMotion 2	Merkur 2 PIR 20, PIR 30 PrimeMotion ArtMotion 2	PrimeMotion PIR 20, PIR 30 TopScan ArtMotion 2	UniScan TopScan
Variants	Merkur 2 ES Merkur 2 ES.C			

Other applications

LBDoor

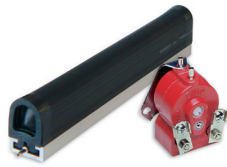
Light barrier



for automatic doors, escalators and industrial doors

DW

Pressure wave switches and safety edges



Available in an extremely wide range of versions

Safety switching devices

EsGate, ESD3, ESR3



For monitoring pressure-sensitive sensors

EsMatix 3



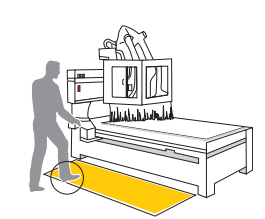
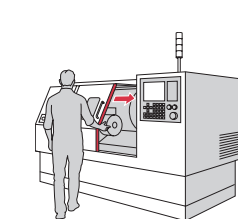
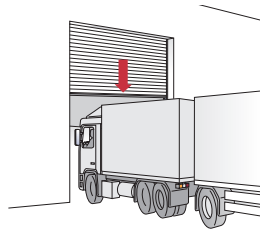
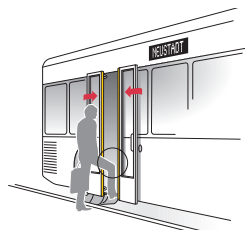
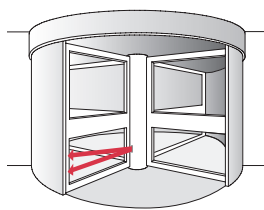
For protecting hazardous areas on machinery and plant

Safety mats

Pressure-sensitive safety mats



High variability in size, shape, colour, number of zones and electrical wiring



- Watertight housing IP67
- Insensitive to extraneous light
- Mountable in pairs

- Proven safety for doors and industrial doors

- In accordance with EN ISO 13849-1
- PLd and e, cat. 2 and 3

- Short response time
- EDM – external device monitoring
- Program/diagnostic display

- In accordance with EN ISO 13856-1
- Any switching function

PrimeMotion
ArtMotion 2
Merkur 2
PIR 20, PIR 30

Pressure wave surface switches (mats or pressure sensitive cells)

ExpertSystem XL
CoverLine, ClickLine
S-Line
Safety mats
ExpertSystem XRF

ExpertSystem XL
CoverLine, ClickLine
S-Line
Safety mats

Safety switching devices
Edge ramp

LBDoor TB12.D.N
LBDoor TB12.N
LBDoor TB12.D.P
LBDoor TB12.P

D1 series: DW10, DW10s,
DW20s, DW40
D3 series: D3-P, D3-PB

EsGate 2/3
ESD3, ESR3

EsMatix 3
EsMatix 3.D
ESD3, ESR3

ESM-52/54
ESM-57
EMP, ES-Button
CareMat



Sliding gate



Vertical door



Folding door



Overhead door

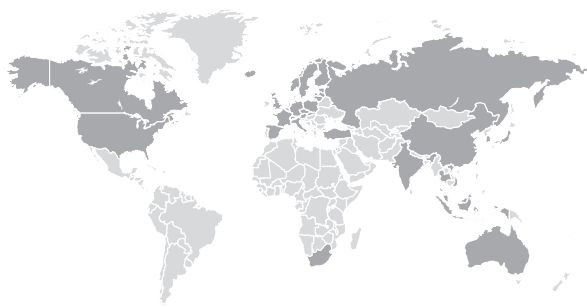


Industry



Public transport

Worldwide near you



Competent partners for our products are located in a large number of countries. Our specialists and authorised partners are very happy to offer personal advice and develop individual solutions with you.

Americas

Phone +1 847 952 37 30
america@bircher.com

Asia Pacific

Phone +60 7 559 05 70
asiapacific@bircher.com

Benelux

Phone +31 36 260 00 26
benelux@bircher.com

China

Phone +86 512 87 77 96 96
china@bircher.com

Czech Republic

Phone +420 736 456 105
cesko@bircher.com

France

Phone +33 1 34 32 35 35
france@bircher.com

Germany

Phone +49 7031 70 60 0
deutschland@bircher.com

Nordic countries

Phone +46 734 74 72 00
nordic@bircher.com

Poland

Phone +420 736 456 105
polska@bircher.com

Southern Europe

Phone +41 79 234 35 89
southeurope@bircher.com

An international contact overview can be found on our website at bircher.com

Is there no local contact for your application? The specialists at our head office will be happy to advise you:

BBC Bircher Smart Access

Wiesengasse 20
8222 Beringen
Switzerland
Phone +41 52 687 11 11
info@bircher.com
bircher.com