

# EPE025/020A0K

Part No. 210732

DATASHEET

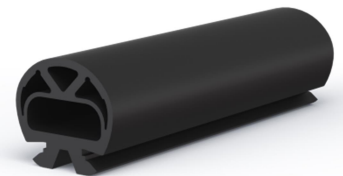
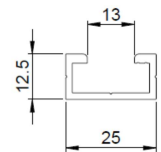
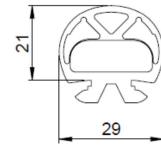
StandardLine Rubber profile / Safety Edge

**Rubber profile data**

Dimensions in mm (Tolerances acc. To DIN ISO 3302-1 tl. E2)	29 x 21
Material	EPDM, black
Delivery length	50 m
Weight	0,35 kg / m
Material hardness	65 Shore A
Accessory: Aluminium rail	AP-5
Accessory: End cap	ENA

**Safety edge data - assembled with ENT-R**

Safety edge, designation	ELE025/020A0Kx
Sensor length (min. /max.)	0.3 m / 6 m (longer on request)
Cable length (min. /max.)	0.5 m / 25 m
Actuating distance / Pre-travel (A / 100mm/s)*	3 mm
Actuating force (A / 100mm/s)*	70 N
Overtravel at 250 N (B1)*	2 mm
Overtravel at 400 N (B2)*	4 mm
Total travel at 600 N (C)*	10 mm
Operating temperature	-10°C to 55°C
Max. temperature range	-30°C to 75°C
Inactive end range with higher forces	60 mm
Switching angle	2 x 45°
Switching cycles	> 10'000
Protection class	IP65
Max. voltage	24 V ACDC
Continuous current load at max. voltage	10 mA
Actuation resistance (typical / max.)	< 200 Ohm / 500 Ohm
Standards	EN ISO 13856-2 / EN 12978
EC type examination certificate	E 6854 (Suva)



\*Acc. to EN ISO 13856-2; Test piece Ø 80 mm; Test location c3; Test speed (A) 100 mm/s; Temp. 20°C  
The actuating force and the deformation travels depend on the response time of the used signal processing unit.

