



# EPE040/105A0J

Part No. 219341

DATASHEET

## Rubber profile

### CoverLine

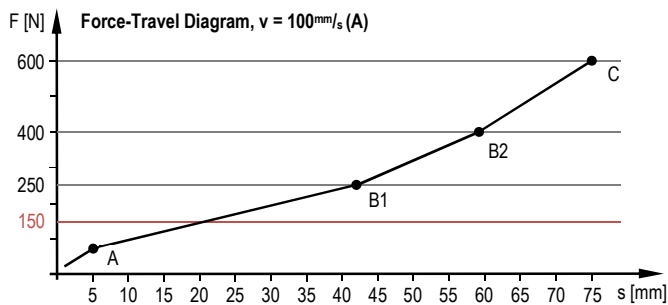
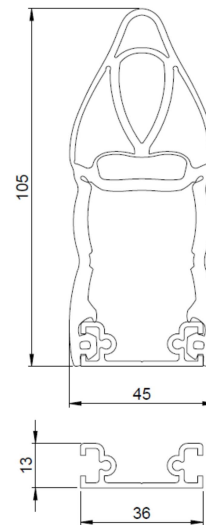
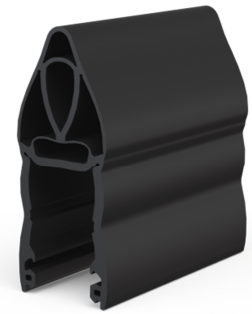
#### ▪ Mechanical data

Dimensions in mm (Tolerances acc. To DIN ISO 3302-1 tl. E2)	45 x 105
Material	EPDM
Delivery length	25 m
Weight	1.5 kg / m
Material hardness	74 Shore A
Aluminium rail	AP-G1
End cap	ENA

#### ▪ General data

Safety edge (assembled)	ELE040/105A0Jx
Sensor length (min. /max.)	0.3 m / 6 m (longer on request)
Cable length (min. /max.)	0.5 m / 25 m
Actuating distance / Pre-travel (A / 100mm/s)*	5 mm
Actuating force (A / 100mm/s)*	70 N
Overtravel at 250 N (B1)*	37 mm
Overtravel at 400 N (B2)*	53 mm
Total travel at 600 N (C)*	76 mm
Operating temperature	-10°C to 55°C
Max. temperature range	-30°C to 75°C
Inactive end range with higher forces	0 mm
Switching angle	2 x 45°
Switching cycles	10'000
Degree of protection	IP65
Electrical Capacity	30 V 100 mA
Actuation resist	≤ 500 Ohm
Standards	EN 12978
EC type examination certificate	E 6735 (Suva)

\*Acc. to EN ISO 13856-2; Test piece Ø 80 mm; Test location c3; Test speed (A) 100 mm/s; Temp. 20°C



00004539C 43/16 Subject to change without notice